



MONTHLY MEMBERSHIP PROGRESS REPORT

Results as of: 12/31/2014

Multiple District 29

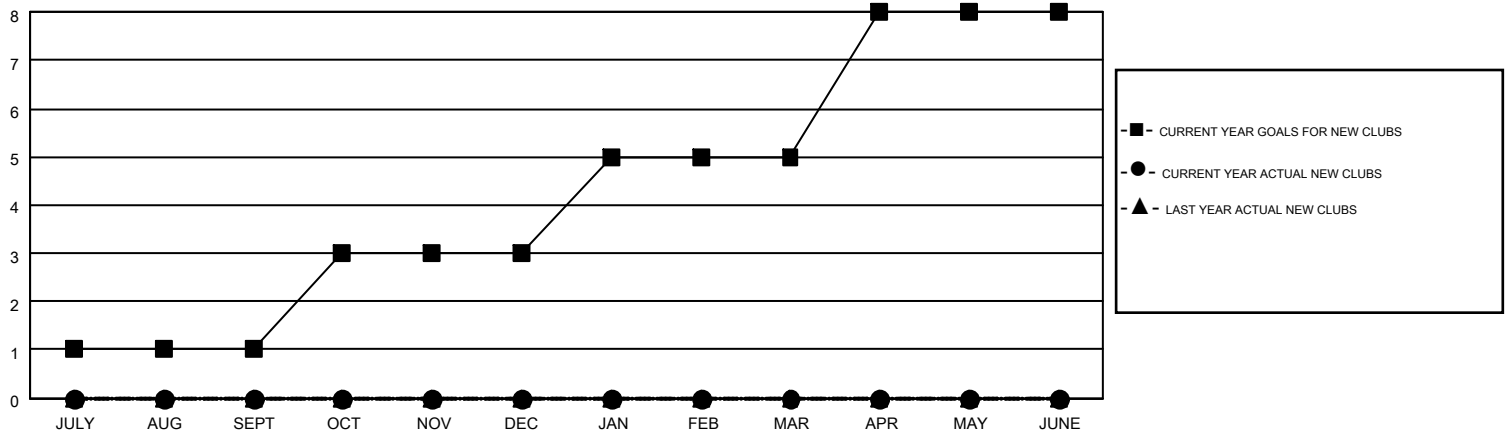
LOCATION: WEST VIRGINIA

GMT: JERRY SMITH

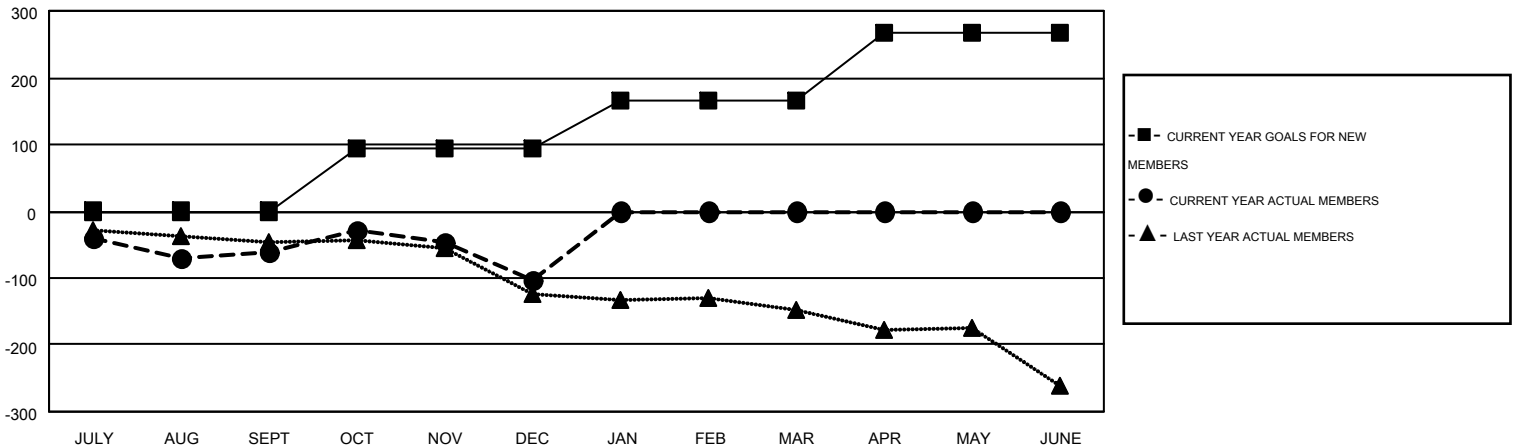
GMT CA 1

Clubs					Members				
RESULTS FOR 2014-2015					RESULTS FOR 2014-2015				
QUARTER	NEW CLUB GOAL	NEW CLUBS	DROPPED CLUBS	NET GAIN/LOSS	QUARTER	NEW MEMBER GOAL	CHARTER AND NEW MEMBERS ADDED	DROPPED MEMBERS	NET GAIN/LOSS
JULY/AUG/SEPT	1	0	2	-2	JULY/AUG/SEPT	0	78	140	-62
OCT/NOV/DEC	2	0	1	-1	OCT/NOV/DEC	95	92	134	-42
JAN/FEB/MAR	2	0	0	0	JAN/FEB/MAR	72	0	0	0
APR/MAY/JUNE	3	0	0	0	APR/MAY/JUNE	101	0	0	0

GOALS AND ACTUAL NEW CLUBS CUMULATIVE



GOALS AND ACTUAL MEMBERS CUMULATIVE



DROPPED CLUBS: 3	73 CLUBS OF 179 ADDED 1 OR MORE NEW MEMBERS	<u>GENDER DISTRIBUTION</u>	
		MALE	3,016 (68.36%)
		FEMALE	1,396 (31.64%)
<u>DROPPED MEMBERS</u>		<u>FAMILY UNIT MEMBERS</u> 1,229	
DECEASED	32	HEAD OF HOUSEHOLD	598
CLUB CANCELLED	11	NON-HEAD OF HOUSEHOLD	631
OTHER	231		
TOTAL	274		

[CLICK HERE FOR HEALTH ASSESSMENT DATA](#)